

Why Jet Parts Engineering?

We make aircraft maintenance more affordable for our global network of airline and MRO partners.

Jet Parts Engineering helps our customers battle their increasing costs of component, airframe, and engine maintenance with spare part solutions and maintenance services. We offer competitive pricing, reduced lead times, and products that meet or exceed the performance of OEMs.

Jet Parts Engineering staff is comprised of some of the best and brightest in the industry - our people are the best part.

Outstanding Service & Support

Lowering the cost of doing business with expertise, reduced lead times, and competitive pricing.

- Parts are stocked with few exceptions
- Same Day Shipping
- Consignment and exchange programs for immediate part availability
- Ecommerce platform providing immediate pricing, availability, and online ordering
- Dedicated sales and engineering support team to address technical questions and concerns

Component MRO Capabilities

Unlimited Accessory Class I and Class II Ratings. Class III Accessory Rating.

- Pneumatics
- Hydraulics
- Electro-mechanical
- Fuel
- High-flow air delivery for wide body pneumatic systems

Engineering Intensive

Deep expertise in the analysis, design, and certification of aircraft equipment.

- In-house reverse engineering using “Test and Computation” methodology
- Integrating the latest material, process, and manufacturing technologies
- FAA-DERs on staff
- 3D CAD, laboratory testing, metallurgy, and nose-to-tail aviation system knowledge
- Engineered parts and repairs that prevent BER

PMA Parts MRO Services DER Repairs

Comprehensive Quality Assurance Systems

- ASA-100 certified
- FAA-approved quality system
- AS9100 certified
- FAA-certified repair stations 6PGR579B, A47R475J, QNCR580K
- EASA, Thailand CAA, and C.A.S.E certified repair stations

Included Aircraft Systems

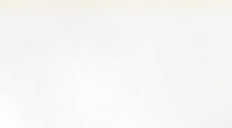
- Airframes
- Engine Starting/Ignition
- Flight Controls
- Fuel Systems
- Hydraulics
- Landing Gear
- Navigation
- Pneumatics
- Electrical Power
- Turbine Engines
- Communications
- Auxiliary Power
- Lights
- Water/Waste

Aircraft & Engine Eligibility

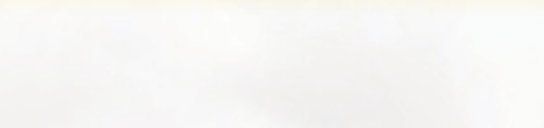
- | | |
|------------------|---------------|
| B737NG | A320 |
| B737MAX | A320neo |
| B747 | A300 |
| B757 | A330 |
| B767 | A340 |
| B777 | A380 |
| B787 | ERJ 135/145 |
| MD-11 | ERJ 170 |
| CRJ 200 | ERJ 190 |
| CRJ 700/900/1000 | Q400 |
| ATR 42/72 | SAAB 340/2000 |
| CFM56-5/7 | PW2000 |
| CF6-80 | PW4000 |
| CF34 | GE90 |

Our JPE Companies

DER Repairs



PMA Parts



MRO Services



We Make Aircraft Maintenance More Affordable



North American Headquarters

4772 Ohio Avenue South
Seattle, WA 98134

www.jetpartsengineering.com

For PMA Parts And DER Repairs:

sales@jetpartsengineering.com

+1 206-281-0963

For MRO Services:

neaco@neacorepair.com

+1 631-589-9070



Our people are the best part.